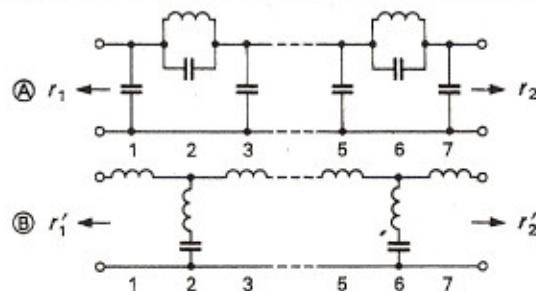
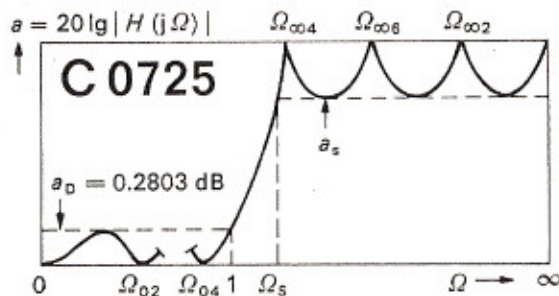


# C 0725

# 8

224



$$H(p) = C \frac{(p - \alpha_1) \prod_{v=2}^4 (p^2 - 2\alpha_v p + \gamma_v)}{\prod_{v=1}^3 (p^2 + \Omega_{\infty 2v}^2)}$$

$$\gamma_v = \alpha_v^2 + \beta_v^2$$

Θ	Ω <sub>s</sub>	a <sub>s</sub> dB	ν	Ⓐ			Ⓑ			Ω <sub>∞2ν</sub>	Ω <sub>0ν</sub>	-α <sub>ν</sub>	±β <sub>ν</sub>	C
				r <sub>1</sub> = 1	r <sub>2</sub> = 1		r <sub>1</sub> = ∞	r <sub>2</sub> = 1						
				c <sub>2ν-1</sub>	l <sub>2ν</sub>	c <sub>2ν</sub>	c <sub>2ν-1</sub>	l <sub>2ν</sub>	c <sub>2ν</sub>					
P			1	0.366770	1.027068		1.263697	1.482460		0.0000000000	1.2134070629	0.0000000000	0.258198890	
				1.485023	1.648251		1.367087	1.151441		0.0000000000	1.0932419878	0.5264775935		
				1.485023	1.027668		0.869418	0.540602		0.0000000000	0.7565469292	0.9486798428		
				0.366770			0.183385			0.0000000000	0.2700064728	1.1829844145		
T			1	1.488114	1.342940		1.541281	1.748138		0.0000000000	0.2990643312	0.0000000000	16.524728944	
				2.387889	1.451302		1.894103	1.746286		0.4338837391	0.2694476519	0.4528714345		
				2.387889	1.342940		1.765133	1.411805		0.7818314825	0.1864635606	0.8160461272		
				1.488114			0.744057			0.9749279122	0.0665460743	1.0175928763		
36	1.701301817	86.6	1	1.437010	1.285239	0.058728	1.513865	1.889680	0.045432	3.509267353	0.0000000000	0.3348286051	0.0000000000	1992.238874212
				2.106221	1.167343	0.284053	1.679616	1.396806	0.237389	1.736605987	0.4713703504	0.2813156569	0.5023039189	
				2.004691	1.147350	0.198909	1.467388	1.143532	0.199573	2.093267485	0.8127492683	0.1671007871	0.8517469209	
				1.312471			0.589293			0.9796704775	0.0529484589	1.0152060200		
37	1.661640141	84.8	1	1.433923	1.281768	0.063394	1.512172	1.686116	0.048192	3.508088841	0.0000000000	0.3370879421	0.0000000000	1669.160690248
				2.090572	1.151830	0.301949	1.667734	1.377760	0.252434	1.695662098	0.4736599225	0.2819555779	0.5053622416	
				1.983609	1.136242	0.211489	1.451323	1.128269	0.212983	2.039957148	0.8145465913	0.1659073647	0.8537762928	
				1.302350			0.558918			0.9799358862	0.0521961961	1.0150624913		
38	1.624269245	83.1	1	1.430724	1.278173	0.067200	1.510413	1.682420	0.051054	3.412085962	0.0000000000	0.3394405041	0.0000000000	1404.004169688
				2.074515	1.135946	0.320600	1.655547	1.358260	0.268125	1.657065355	0.4760340928	0.2825082648	0.5085381842	
				1.962005	1.124818	0.224599	1.434905	1.112670	0.227071	1.989552079	0.8163984612	0.1648691798	0.8558626356	
				1.291921			0.548187			0.9802083187	0.0514250427	1.0149140502		
39	1.589015729	81.3	1	1.427412	1.274451	0.071150	1.508586	1.678587	0.054020	3.320861549	0.0000000000	0.3418896346	0.0000000000	1185.356712550
				2.058050	1.119893	0.340039	1.643055	1.336311	0.284493	1.820638033	0.4784950248	0.2832730098	0.5118351205	
				1.939885	1.113076	0.238261	1.418141	1.096434	0.241877	1.941828903	0.8183084042	0.1633851797	0.8580059312	
				1.281183			0.537092			0.9804877442	0.0505351733	1.0147606230		
40	1.555723827	79.7	1	1.423982	1.270599	0.075249	1.506690	1.674614	0.057094	3.234050487	0.0000000000	0.3444389037	0.0000000000	1004.255744383
				2.041178	1.103075	0.380303	1.630260	1.317918	0.301588	1.586220293	0.4810450032	0.2839490253	0.5152565156	
				1.917253	1.101015	0.252499	1.401042	1.079860	0.257446	1.896590528	0.8202738619	0.1620542272	0.8502081391	
				1.270129			0.525625			0.9807741295	0.0498287726	1.0146021345		
41	1.524253087	76.0	1	1.420431	1.266614	0.079500	1.504720	1.670495	0.060279	3.151324814	0.0000000000	0.3470921295	0.0000000000	853.620563820
				2.023901	1.086098	0.381430	1.617183	1.297088	0.319385	1.553668001	0.4836864420	0.2848354383	0.5188064385	
				1.894114	1.086633	0.267339	1.363616	1.062945	0.273825	1.853653435	0.8222968914	0.1606751504	0.8824631940	
				1.258758			0.513776			0.9810674390	0.0490000364	1.0144385088		

Θ	Ω <sub>s</sub>	a <sub>s</sub> dB	ν	Ⓐ			Ⓑ			Ω <sub>∞2ν</sub>	Ω <sub>0ν</sub>	-α <sub>ν</sub>	±β <sub>ν</sub>	C
				r' <sub>1</sub> = 1	r' <sub>2</sub> = 1		r' <sub>1</sub> = 0	r' <sub>2</sub> = 1						